



# RATES & CHARGES 2008 / 2009

ENQUIRIES?? - PLEASE PHONE - 07 5462 0386

Rates and charges for the Lockyer Valley Regional Council are issued twice per annum  
The approximate issue date for the next levy is 4 March 2009 with a due date of 3 April 2009

**15% RATES CAP** — Any increase in the general rate has been limited to no more than 15% of the general rates levied in 2007/2008. The cap does not apply where the area of land changes, where there is a change in the Differential Rating Category, the general rate was calculated on a valuation issued subject to Section 25 of the Valuation of Land Act 1944 or where the assessment is levied the minimum general rate in the current year.

**10% DISCOUNT** is allowed on any rate or charge paid in full, together with any arrears, provided payment is received on or before the due date.  
Discount is not allowed on overdue rates, interest, SES Levy, Environmental Levy, Water Consumption Charges, Special Water Charges, Preston Water, fire levies or other sundry charges.



**PART PAYMENTS** can be made via any of Council's payment options shown on the reverse of your rate notice. Please present your notice when making payments in person at Australia Post.

**INTEREST** is charged at the rate of 11.00% per annum calculated on daily balances and compounded monthly, on all rates and charges which remain unpaid thirty days after the expiration of the discount period and on any arrears of rates and charges.

The **STATE EMERGENCY SERVICES LEVY** is charged per assessment and assists with the operational expenses of the Volunteer State Emergency Services Unit.

The **ENVIRONMENTAL LEVY** funds environmental works to conserve, remediate and manage significant areas, assist with voluntary conservation initiatives and land care, and fire, weed and waste management.

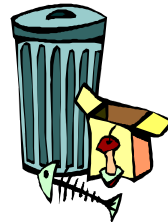
**SEWERAGE CHARGES** are levied per tenement for domestic properties, per pedestal for commercial properties and per parcel for vacant land.



Funds raised from the **RURAL FIRE LEVY** assist with the operational expenses of the Rural Fire Brigades within the Council area.

The **WASTE COLLECTION** charge is levied per collection service provided by Council's contractor.

The **WASTE MANAGEMENT CHARGE** funds the expenditure and administration costs involved with the operation, maintenance and upgrading the waste management facilities including landfill sites, transfer stations and rubbish bins located in public areas such as parks and reserves. Waste management charges are levied per assessment (including vacant land) or per waste collection charge, whichever is greater. Exemptions from the Waste Management Charge for properties with a bulk bin are no longer applicable.



**WATER BASE RATES** are levied on property connected to or capable of being connected to the reticulated water scheme.

**WATER CONSUMPTION CHARGES**  
(for water consumed after 1 July 2008)

**Residential Properties**  
0-150 kL per half year — \$1.30 per kL  
150kL + per half year — \$2.00 per kL

**Commercial Properties**  
0-150 kL per half year — \$1.50 per kL  
150kL + per half year — \$1.80 per kL